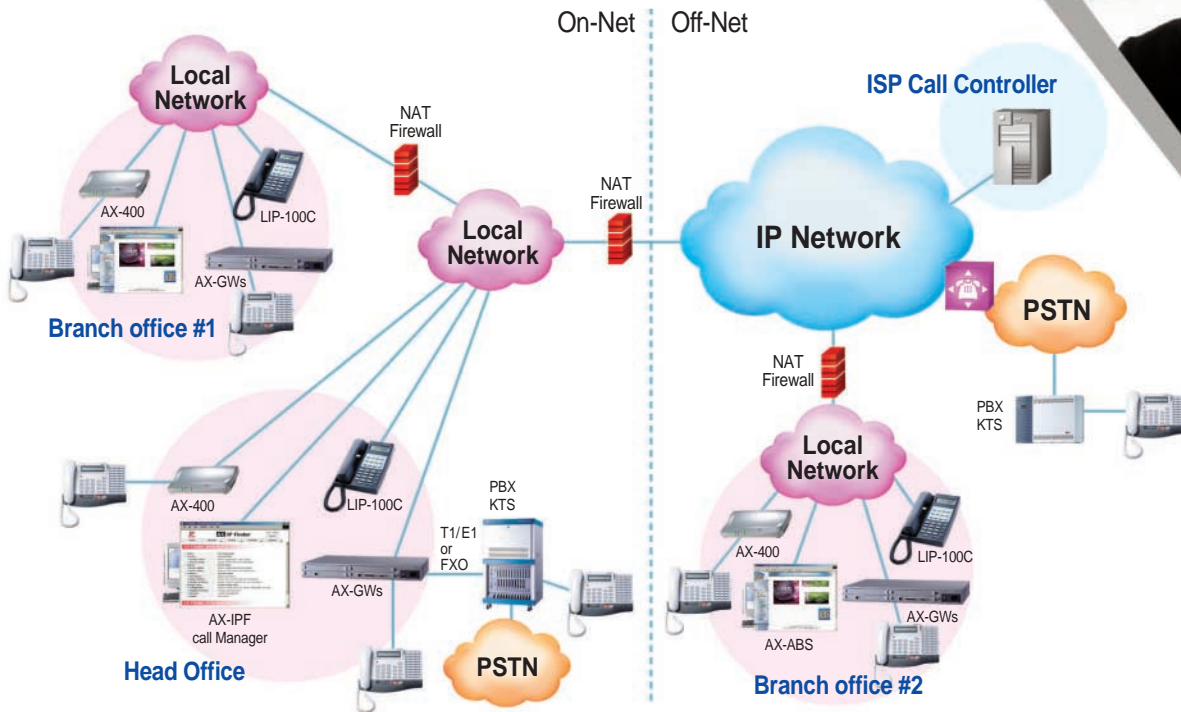


PVN(Private VoIP Network) Solution



Call Manager (AX-IPF)

- ▶ Assigns extension numbers to VoIP users
- ▶ Inter-connects head office, branch offices, and telecommuters effortlessly
- ▶ Simply dial an extension number to anyone on the network
- ▶ Free "Intranet" calls within the private data network
- ▶ Provides access to ISP's network for low-cost local and long distance calling
- ▶ Web interface for easy operation



Automated Billing System (AX-ABS)

- ▶ Provides billing/accounting information
- ▶ Easy to change configurations such as rate table, country, tax, and invoice format
- ▶ Invoice print-out feature
- ▶ Detailed call information for operator
- ▶ Web interface for easy operation



Technical Specifications

VoIP Gateways

VoIP gateway specifications

- H.323v3 and T.38 support (SIP protocol model also available for AX-2100)
- G.711 A/u-law(64Kbps), G.729A (8Kbps) and/or G.723.1 (5.3/6.3Kbps) support

Voice/Data interface specifications

- Analog interface : 2 ~ 24 port (FXS or FXO)
- Digital interface : 1 T1 or 1 E1 port (PBX signaling : DTMF/R2/ISDN PRI)
- LAN interface : FastEthernet (DHCP supported)
 - ▶ ISDN BRI interface is also available for AX-1100
 - ▶ AX-410/420/430 only support Ethernet interface

Model	FXS/FXO	T1/E1	ISDN BRI	Voice Codec	LAN port	Power	Dimension(HxWxD)
AX-200**	FXS 2 ports	N/A	N/A	G.723.1 or G.729A	Ethernet	110~240 VAC	35x180x230 (mm)
AX-410	FXO 4 ports	N/A	N/A	G.723.1 or G.729A	Ethernet	110~240 VAC	50x213x178 (mm)
AX-420	FXS 4 ports	N/A	N/A	G.723.1 or G.729A	Ethernet	110~240 VAC	50x213x178 (mm)
AX-430	FXS 3, FXO 1	N/A	N/A	G.723.1 or G.729A	Ethernet	110~240 VAC	50x213x178 (mm)
AX-1100	4/8 ports	N/A	2/4 ports	G.723.1 and/or G.729A	FastEthernet	110~240 VAC	44x439x310 (mm)
AX-2100*	8/16/24 ports	1 port	N/A	G.723.1 and G.729A	FastEthernet	110~240 VAC	54x439x300 (mm)

*FXS/FXO interface and T1/E1 interface can not be installed to AX-2100 model simultaneously.

**All models except AX-200 support T.38 real-time FAX over IP

IP Phones

IP phone specifications

- Protocol:H.323v3,SIP, MGCP
- Half/Full Duplex Speaker Phone
- Network Protocol: TCP/IP, UDP,DHCP, Telnet, TFTP, NTP, RTP, etc
- Network I/F: 10/100 Ethernet 2 Ports (additional PSTN Port for LIP-100C)

Model	Function Buttons	LCD	Codec	Soft Keys	Headset Jack	Power Feeding	Speaker Phone
LIP-100C	8	2x16	G.711,G.723.1,G.729A	X	X	X	O
LIP-200C	20	4x20	G.711,G.723.1,G.729A	X	X	X	O
LIP-6804	4	N/A	G.711,G.723.1,G.729A	X	X	O	X (OHD)
LIP-6812	12	3x24	G.711,G.723.1,G.729A	3	O	X	O
LIP-6830	30	3x24	G.711,G.723.1,G.729A	3	O	O	O
LIP-6824LD	24	QVGA(240x320)	G.711,G.723.1,G.729A	3	O	O	O



LG Electronics Inc.

LG Kangnam Tower
679, Yoksam-dong, Kangnam-gu, Seoul 135-985, Korea
Tel:+82-2-2005-2943 Fax:+82-2-2005-2599

<http://bcs.lge.com>

This document is for general guidance purpose only. The information furnished in this document is valid as of the date of its publication and is subject to change without notice. LG Electronics, Inc. assumes no responsibility for any errors or omissions in this document that result in your misunderstanding.

Copyright 2004, LG Electronics, Inc. All rights reserved.
Printed in Korea/Issue 3.0

LG VoIP Solutions

The Best VoIP Solution
LG VoIP Product Family



LG VoIP

AX-200/400series/1100/2100
LIP-100C/200C, LIP-6800 Series, ABS/IPF

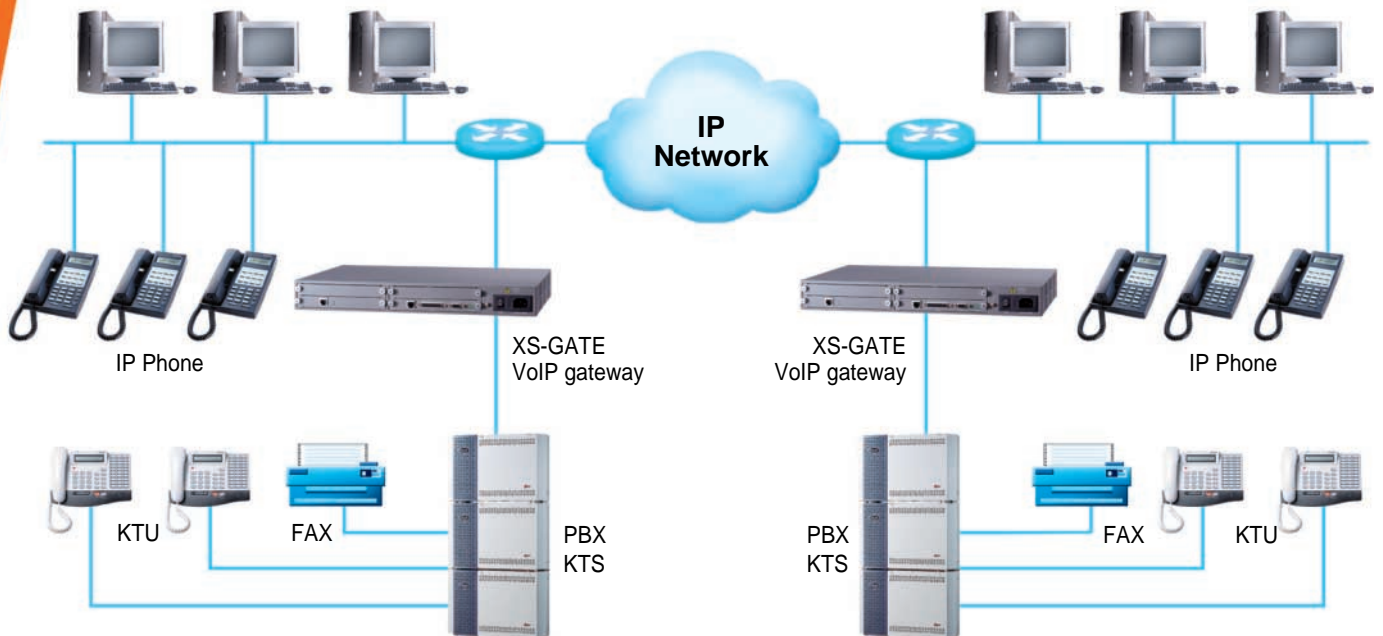
LG VoIP product family provides industry standard Voice over IP' solutions for enterprises and organizations.

LG VoIP product enables real-time voice and FAX communication over IP networks using international protocol standards such as H.323, SIP, MGCP and T.38.

The Best VoIP Solution

LG VoIP product family

- Gateway (AX-200/400series/1100/2100)
- IP phone (LIP-100C/200C, LIP-6800 Series)
- Automated Billing System (AX-ABS)
- Call manager (AX-IPF)





VoIP Gateway

Features

- ▶ Flexible numbering plan support (Static call routing table)
- ▶ CDR (Call Detail Record) generation for billing/accounting application
- ▶ Port/channel access control and FTP/Web/Telnet access control for network security
- ▶ Call re-routing to backup line (PSTN fall-back)
- ▶ IVR (Interactive Voice Response) for 2-stage dialing
- ▶ PBX functions such as call transfer/pickup/hold



AX-2100 (8~24 FXS/FXO ports or 1 PRI port)



AX-1100 (4~8 FXS/FXO ports or 2~4 BRI ports)



AX-410 (4 FXO ports)
AX-420 (4 FXS ports)
AX-430 (3 FXS + 1 FXO ports)



AX-200 (2 FXS ports)

QoS (Quality of Service) features

- ▶ Jitter buffer control, G.168 Echo cancellation
- ▶ DiffServ (IP precedence) support
- ▶ VAD (Voice Activity Detection)/CNG (Comfort Noise Generation) for bandwidth efficiency

Easy installation & management

- ▶ Console(RS-232C)/Web/Telnet Interface for local/remote management (AX-series)
- ▶ SNMP v2 support (SNMP-to-CORBA gateway S/W is also available for AX-2100 model)
- ▶ Remote S/W upgrade via FTP

IP-Phone

Features

- ▶ Remote Upgrade & Diagnostics
- ▶ Call Transfer, Forward, Hold, Park
- ▶ Redial, Return, Volume, Ringer Control
- ▶ PSTN fall-back (LIP-100C only)
- ▶ Win CE: Web Browser, Email, Media Player (LIP-6824LD only)
- ▶ QoS: ToS, 802.1 p/q



LIP-100C



LIP-200C



LIP-6804



LIP-6812



LIP-6830



LIP-6824LD